

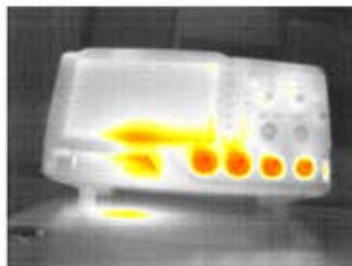
THERMAL Eye



Area Risks and Costs Reduction

Fire prevention
Warning signal
Area heat map
Cooling map

Thermal sensor controlling system



EASY Sensor Reach

Everytime Everywhere

PRODUCT INFORMATIONS OVERVIEW

Costumers:	industrial, home, developer
Market area:	agriculture, facility management
Product:	Hardware: controller & sensors Software/IT: web interface gsm(sms) & web interface email & web interface
Device control:	easy to set up indoor & outdoor
Device data access	Google & Linux
Device install:	5mp, autofocus
Controller os:	PH, temperature
Camera: sensor	ec, vwc, tds, epsilon, salanity
Soil sensors:	320px x 240px, -40°C +330°C
Thermal sensor:	850/900/1800/1900 MHz
Device GSM range:	Built in & SD card
Memory:	solar & accu pack, adapter (110V-220V)
Energy supply:	outdoor metal, 2/4/6 meters high
Holder structure:	

MORE INFO:

WWW.ACTIVEYE.HU

